



IOWAVIEW CONSORTIUM OVERVIEW 2015 - 2016



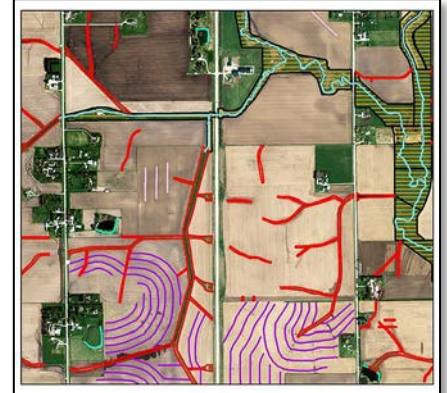
ENHANCING THE UNDERSTANDING AND USE OF REMOTE SENSING IN IOWA

IowaView is a member of the AmericaView Consortium, a nationally coordinated network of academic, agency, non-profit, and industry partners and cooperators that share the vision of promoting and supporting the use of remote sensing data and technology within each state.

The mission of the IowaView consortium is to increase the knowledge and use of remote sensing and other geospatial technologies for the benefit of the citizens of Iowa, through education, research and service. IowaView supports the collection and management of publicly accessible remote sensing data archives (ortho.gis.iastate.edu) which includes summer NAIP imagery, spring imagery and other datasets useful for research and education.

IowaView moved to Iowa State University (ISU) in 2013 from its previous home at the University of Northern Iowa GeoTREE Center where it first received funding in 2007. ISU IowaView staff are housed at the GIS Facility, working with campus collaborators from several departments across campus. Education and outreach have been the primary focus of IowaView in the last two years and will continue in the coming years. Those goals have resulted in public mapathons to create data in underserved parts of the world, employing students to mosaic and georeference previously unused imagery and creating an inventory of soil and water conservation practice data from aerial imagery.

Two additional projects just getting off the ground aim to provide remotely sensed data to end users. The first records hourly perspective views of a grassland landscape in southern Iowa that can be used to monitor seasonal and yearly changes; the second provides a computer node in the country-wide Earth Observation Depot Network, providing satellite imagery and products for download through a distributed network.



*Black Hawk County, Iowa.
2015 USDA NAIP summer natural color
aerial imagery showing changes in
terraces and grassed waterways from
2010.*

CONSORTIUM MEMBERSHIP



www.gis.iastate.edu\GISF

**IOWA STATE
UNIVERSITY**

www.iastate.edu

State Coordinator: Robin McNeely mobes@iastate.edu



<http://www.iowadnr.gov/Conservation/Geology/Mapping-GIS>



<http://www.iowagis.org/>

GIS/RS Analyst: Amy Logan amylogan@iastate.edu

IowaView Principal Investigator:

Kevin Kane

Iowa State University

515-294-0526

kkane@iastate.edu



<http://www.iowaview.org/>

AmericaView Website:

www.AmericaView.org

Roberta Lenczowski, Executive Director:

roberta.lenczowski@sbcglobal.net

Chris McGinty, Program Manager:

chris.mcginty@americaview.org

Jarlath Oneil-Dunne, Board Chair:

Jarlath.oneil-dunne@uvm.edu